

THAMES CROSSING ACTION GROUP

The Villages of E & W Tilbury + Linford

WWW.TCAG.INFO

Agenda

- ▶ TCAG Introduction
- ▶ High Level Facts
- ▶ Overview of Revised Red Line Route
 - ▶ North Thames Portal
 - ▶ Rail & Muckingford Road Crossing
 - ▶ New 'Area' By Coalhouse Fort
- ▶ Short & Long Term Impacts of Route 3
 - ▶ Construction - Route Legacy - Communities - Growth
- ▶ Communicate
- ▶ What Can I do?
- ▶ Revised Timing
- ▶ Sales Pitch
- ▶ CPRE - Alternatives - Lobby Groups
- ▶ Question Time (Q&A)

The Team

- ▶ Roger (Chair) - Matt (Vice Chair)
- ▶ Laura (Webmaster) - Mark (IT & Technical)
- ▶ Kim (Secretary) - Leigh (Legal)

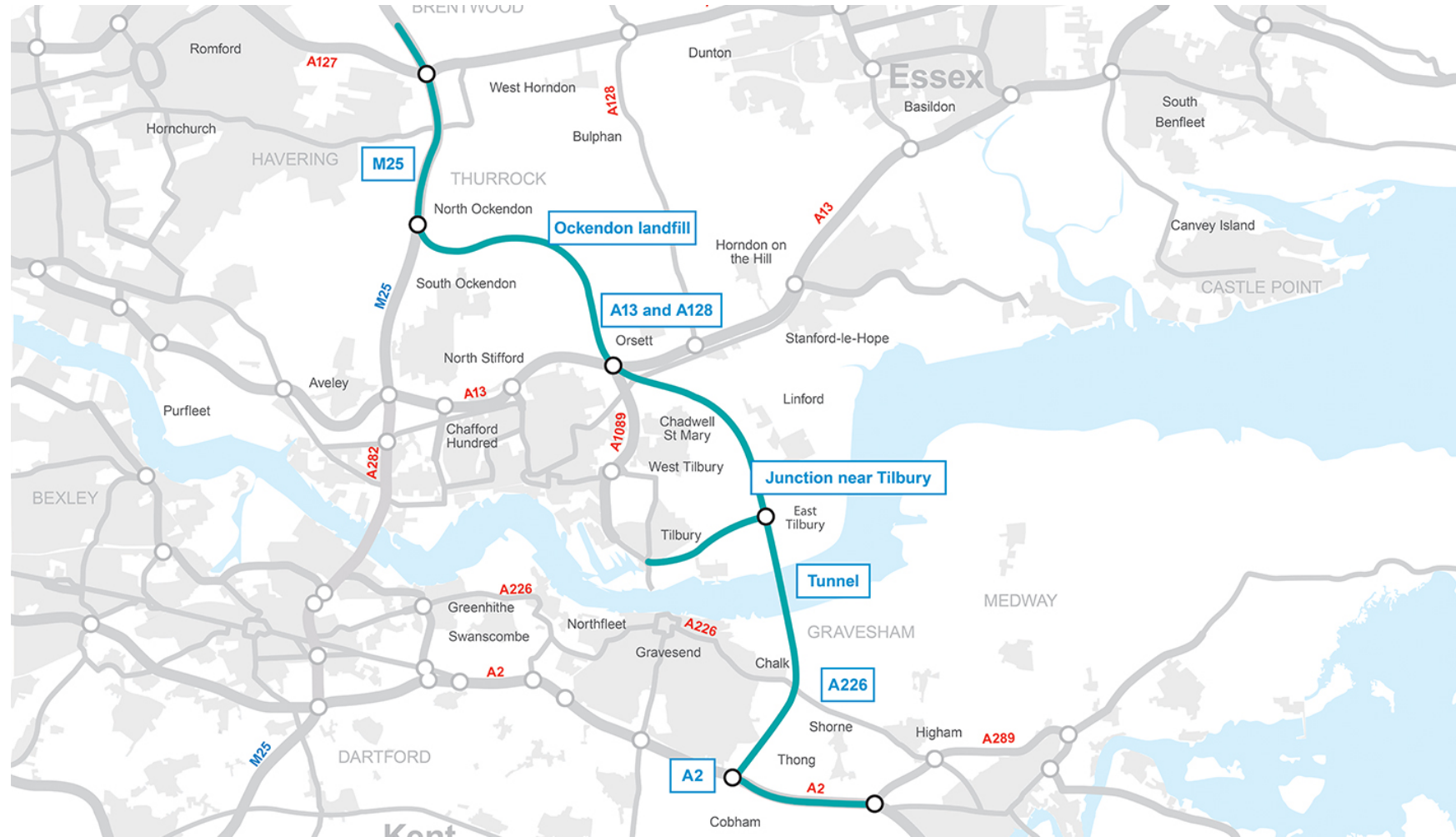
- ▶ Su Sammons (Ward Cllr)
- ▶ Cllr Smith (Chair Thurrock Council Task Force)
- ▶ Alex (CPRE) - James (Kent Campaigner) - Gordon (Rail)

- ▶ Thanks To Jan Fawsitt - Rosie Barnes - Linda Mulley The Forum - All Volunteers

High Level Facts

- ▶ 86% Traffic Will Remain at the Existing Crossing
- ▶ £8bn worth of Growth (Claim HE / SELEP Support it)
- ▶ 70% Crossing Capacity Increase (Thames Gateway)
- ▶ A282 Current Daily Average ~150k Crossings
- ▶ Thurrock has 17 Air Quality Management Areas
- ▶ 2027 - A282 Crossing remains over capacity
 - ▶ M25 Continues to cause gridlock across Thurrock
 - ▶ Poor Weather Conditions Continue to close the A282 (Bridge - Southbound)
- ▶ 2027 Thurrock sees rise in the number of vehicles crossing the Borough
- ▶ 10% of Thurrock Ports freight forwarding put on rail

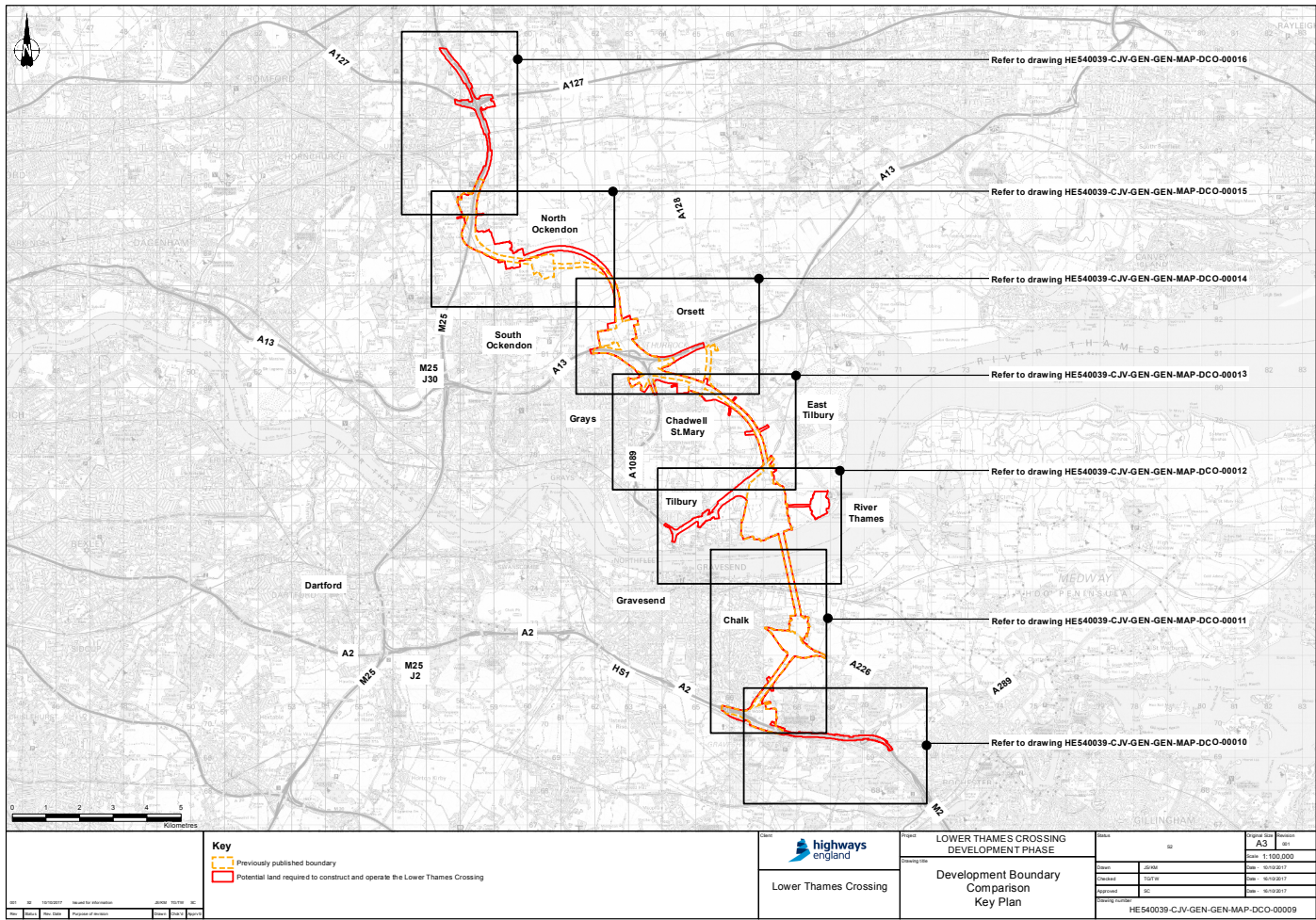
Revised Route 3



Highways England Development Points

- ▶ **M25** - New junction design to cross under the M25 to reduce the visual impact. Widening of a section of the M25 to improve traffic flow.
- ▶ **Ockendon** - Realignment to avoid going across the landfill.
- ▶ **Access to the A13 and Tilbury:**
- ▶ **A13 and A128** - Redesign of the junction with the A13 to reduce congestion. This would allow us to remove the A128 junction from the proposed design.
- ▶ **New junction near Tilbury** - A new junction near east Tilbury and link road to Tilbury to improve traffic flow and provide an alternative route for HGVs.
- ▶ **A226 junction** - Removal of this junction to reduce the traffic impact on local roads.
- ▶ **A2** - New junction design and widening of A2 to M2, junction 1 to reduce congestion and improve traffic flow.
- ▶ **Future proofing** - Three lanes rather than two for at least some of the route.
- ▶ **Tunnel portals** - Continuing our assessment about the length of the tunnel and where to locate the entrances.

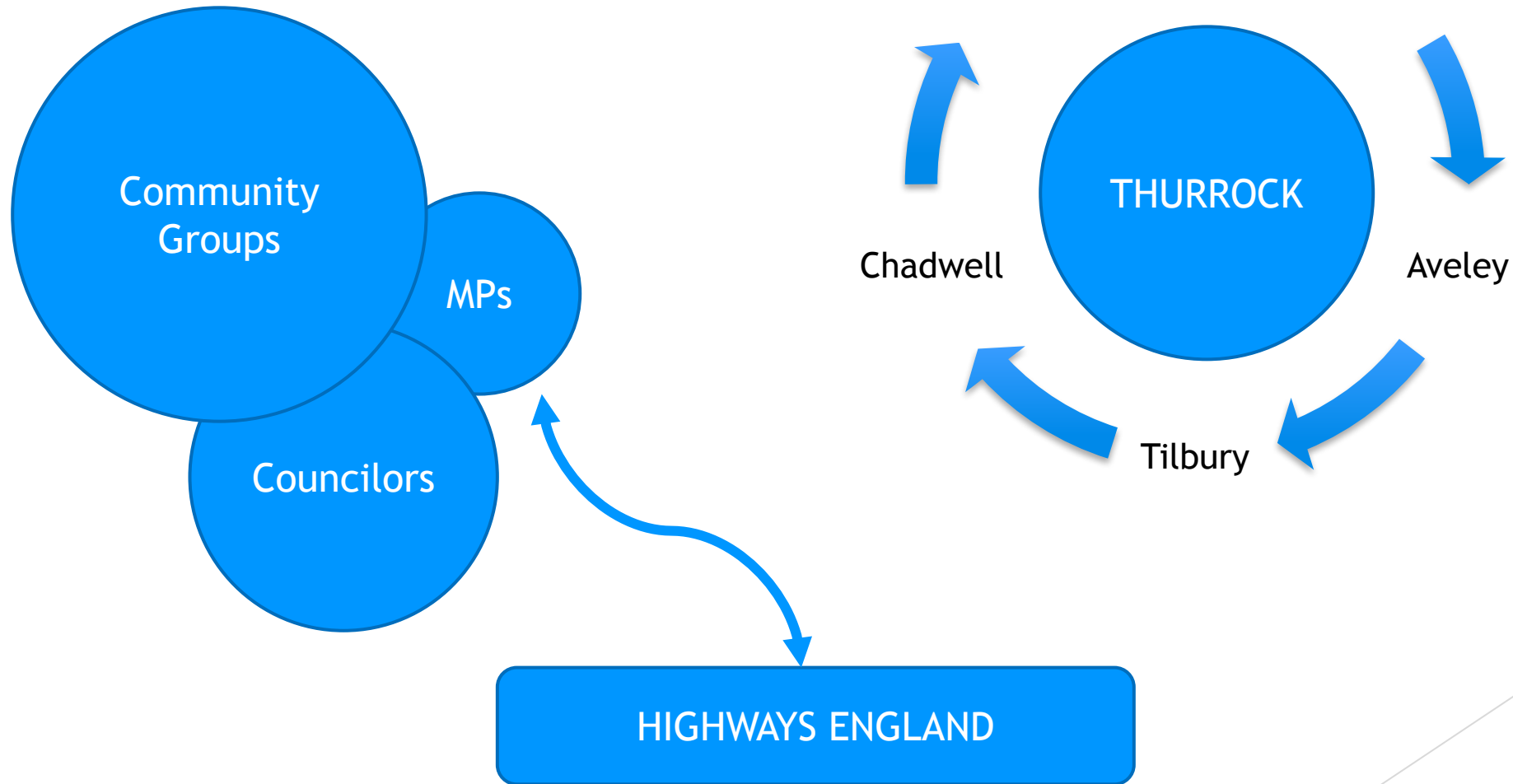
Red Line Overlay



Ask Questions

- ▶ How will traffic migrate via Thurrock when the Bridge closes
 - ▶ Can Highways England provide a simulation showing how route 3 will cope
 - ▶ How will J30 process traffic efficiently
 - ▶ Prove to us the A13 Eastbound will cope with M25 traffic diversions to Route 3
 - ▶ Route 3 cannot allow national traffic to impact our local roads
- ▶ Will the docks provide parking provisions for extra HGV shipping
- ▶ Construction blight (air, noise, vibration, light, working hours)
- ▶ Lasting blight legacy
- ▶ 3D Renderings of design

What Can You Do?



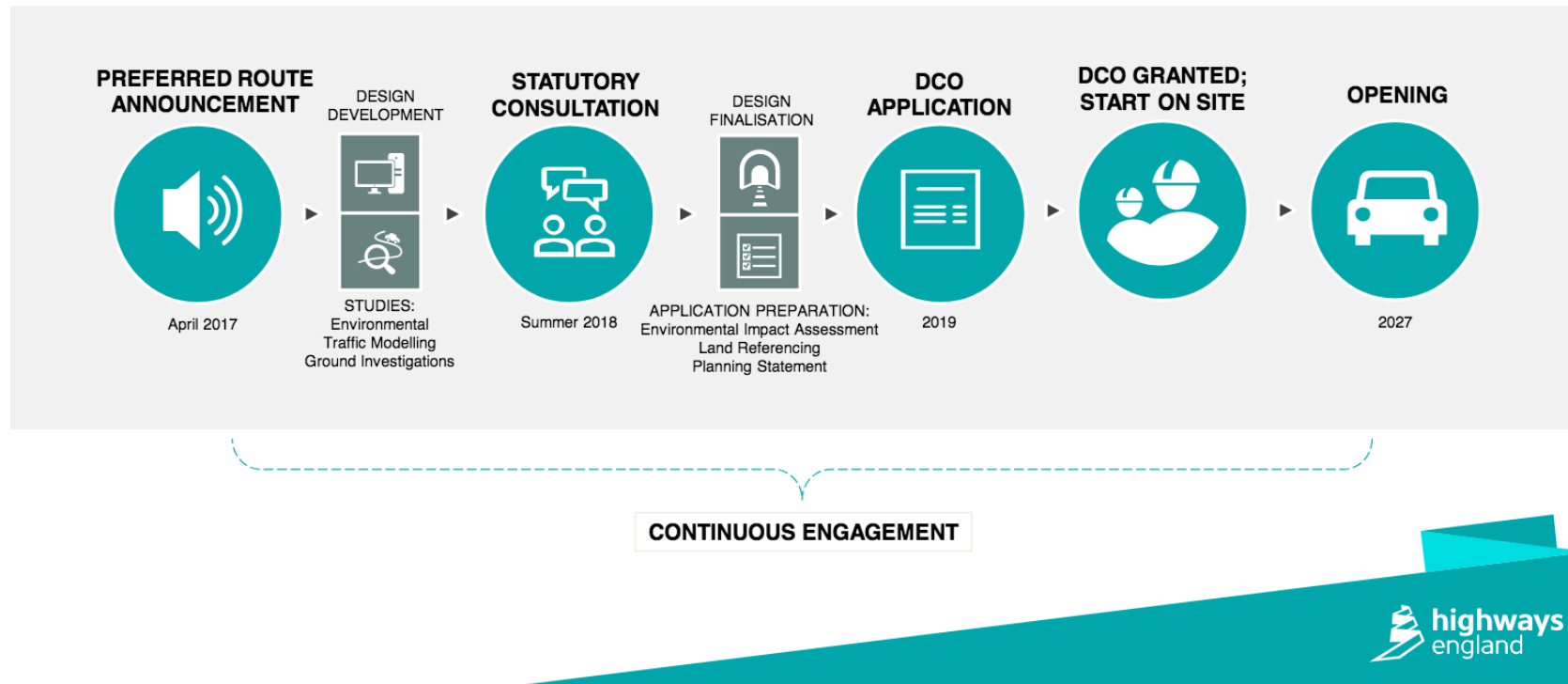
Data Driven
Respectful
Responsibility
Teamwork
Engage

Next Steps

- ▶ Engage with your ward Cllrs & MPs
- ▶ Go to Community Forum Meetings
- ▶ Submit Your Questions to Thurrock Task Force Meetings
- ▶ Take Ownership of your Area
- ▶ Write letters / emails to Westminster

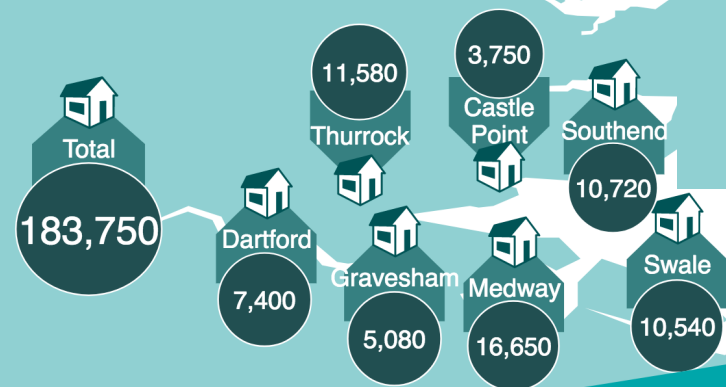
Revised Timing

What happens next?

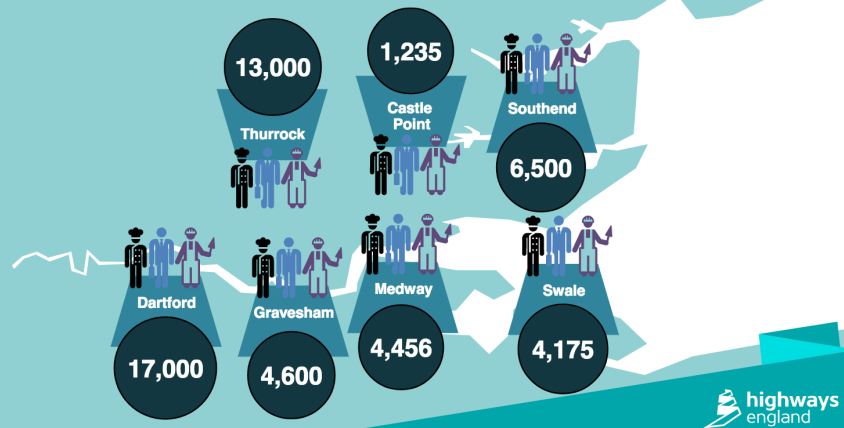


Sales Pitch

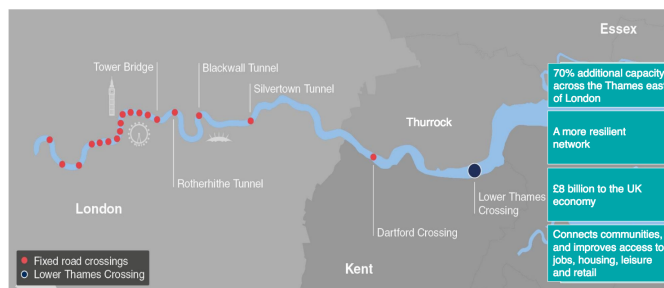
Housing targets 2016-2026



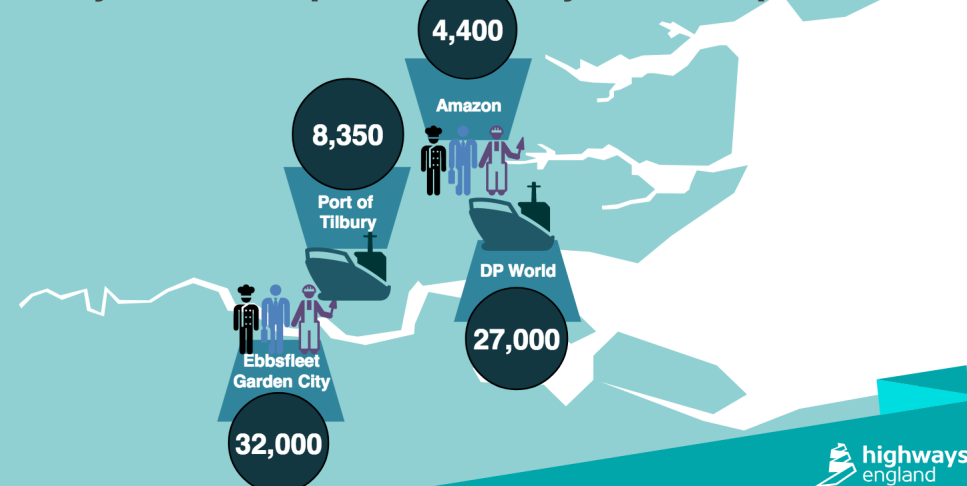
Estimated jobs growth 2016-2026



Enabling growth – what the scheme delivers



New jobs in the ports and major developments



CPRE Presentation

QUESTION TIME

- ▶ Hands up - your questions will be answered in order
- ▶ A mic will come to you to enable the room to hear
- ▶ Please be respectful of people speaking
- ▶ One question at a time

THANK YOU

THAMES CROSSING ACTION GROUP

The Communities of E & W Tilbury + Linford

WWW.TCAG.INFO